



### Aufzugheber

Lift cylinder

Typ: AZK .. -2.1- 63-150 dE

Typ: AZK EB -2.1- 63-150 dE - RBV6-R...-II(S)

Bauart  
Design

Serie  
Serial

Kolbenstangendurchmesser  
Piston rod diameter

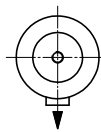
dämpfender Endanschlag  
cushioning end stop

Leitungsbruchventil  
Self-closing valve

Maßblatt-Nr. - Data sheet No.

AZ 05.11

RBV6-R...-II(S)



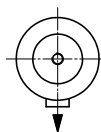
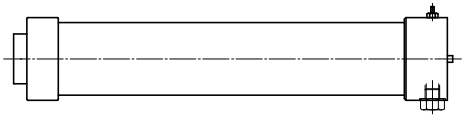
Typ: AZK EB -2.1-  
63/70/80/85/90/100/110/120/130/140/150 dE  
dE = 35 mm

Ebener Boden - Flat bottom

Maßblatt-Nr. - Data sheet No.

AZ 05.11

RBV6-R...-II(S)



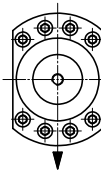
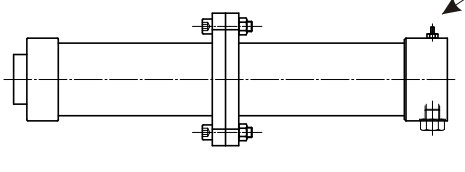
Typ: AZK BZ -2.1-  
63/70/80/85/90/100/110/120/130/140/150 dE  
dE = 35 mm

Bodenzapfen - Bottom pin

Maßblatt-Nr. - Data sheet No.

AZ 05.12

RBV6-R...-II(S)



Typ: AZK EB -2.1-  
63/70/80/85/90/100/110/120/130/140/150 dE  
dE = 35 mm

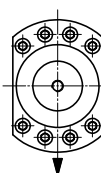
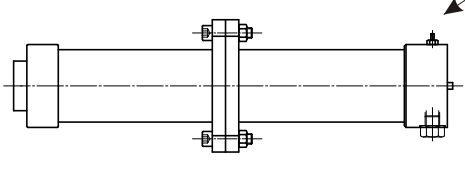
geteilte Ausführung  
splitted design

Ebener Boden - Flat bottom

Maßblatt-Nr. - Data sheet No.

AZ 05.12

RBV6-R...-II(S)



Typ: AZK BZ -2.1-  
63/70/80/85/90/100/110/120/130/140/150 dE  
dE = 35 mm

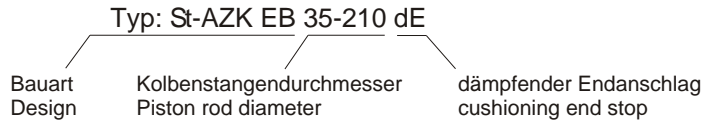
geteilte Ausführung  
splitted design

Bodenzapfen - Bottom pin

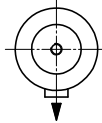
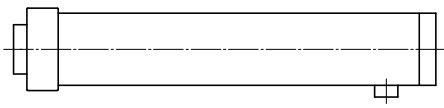


# Aufzugheber Lift cylinder

Typ: St-AZK.... 35-210 dE



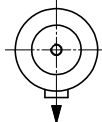
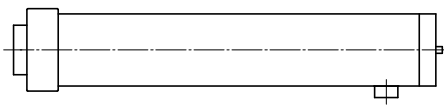
Maßblatt-Nr. - Data sheet No. **AZ 05.01**



Typ: St-AZK EB  
 35/42/50/63/70/80/85/90/100/110/120  
 130/140/150/160/170/185/195/210 dE  
 dE = 35 mm

Ebener Boden - Flat bottom

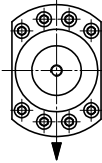
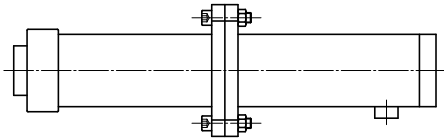
Maßblatt-Nr. - Data sheet No. **AZ 05.01**



Typ: St-AZK BZ  
 35/42/50/63/70/80/85/90/100/110/120  
 130/140/150/160/170/185/195/210 dE  
 dE = 35 mm

Bodenzapfen - Bottom pin

Maßblatt-Nr. - Data sheet No. **AZ 05.03**

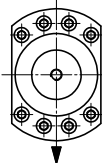
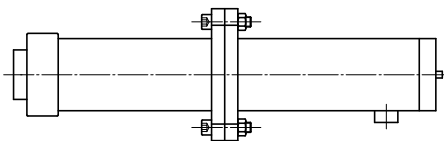


Typ: St-AZK EB  
 70/80/85/90/100/110/120/130/140/  
 150/160/170/185/195/210 dE  
 dE = 35 mm

geteilte Ausführung  
splitted design

Ebener Boden - Flat bottom

Maßblatt-Nr. - Data sheet No. **AZ 05.03**

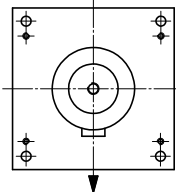
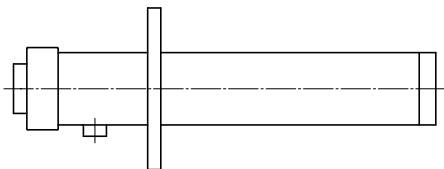


Typ: St-AZK BZ  
 70/80/85/90/100/110/120/130/140/  
 150/160/170/185/195/210 dE  
 dE = 35 mm

geteilte Ausführung  
splitted design

Bodenzapfen - Bottom pin

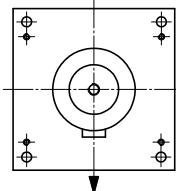
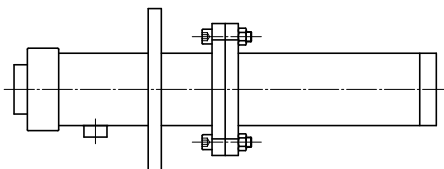
Maßblatt-Nr. - Data sheet No. **AZ 05.02**



Typ: St-AZK SF  
 35/42/50/63/70/80/85/90/100/110/120  
 130/140/150/160/170/185/195/210 dE  
 dE = 35 mm

Starrer Flansch kopfseitig - Fixed head mounting plate

Maßblatt-Nr. - Data sheet No. **AZ 05.04**



Typ: St-AZK SF  
 70/80/85/90/100/110/120/130/140/  
 150/160/170/185/195/210 dE  
 dE = 35 mm

geteilte Ausführung  
splitted design

Starrer Flansch kopfseitig - Fixed head mounting plate

**Aufzugheber**

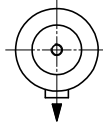
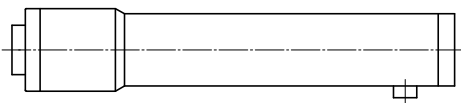
Lift cylinder

Typ: AZ .. -1.0- 235-500 dE

Typ: AZ SF -1.0- 235-500 dE

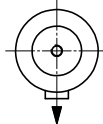
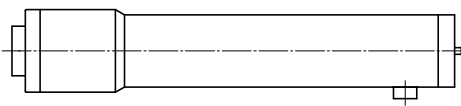
Bauart  
DesignSerie  
SerialKolbenstangendurchmesser  
Piston rod diameterdämpfender Endanschlag  
cushioning end stop

Maßblatt-Nr. - Data sheet No.

**AZ 05.13**Typ: AZ EB -1.0- 235/260/285/320/  
360/400/450/500 dE  
dE = 35 mm

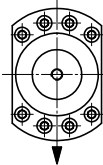
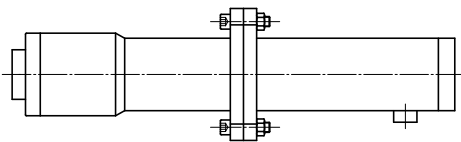
Ebener Boden - Flat bottom

Maßblatt-Nr. - Data sheet No.

**AZ 05.13**Typ: AZ BZ -1.0- 235/260/285/320/  
360/400/450/500 dE  
dE = 35 mm

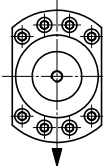
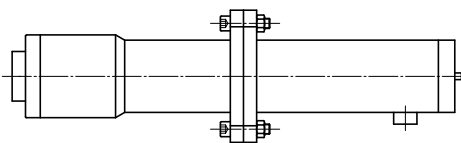
Bodenzapfen - Bottom pin

Maßblatt-Nr. - Data sheet No.

**AZ 05.15**Typ: AZ EB -1.0- 235/260/285/320/  
360/400/450/500 dE  
dE = 35 mmgeteilte Ausführung  
splitted design

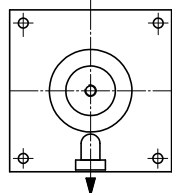
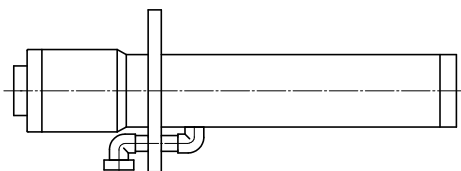
Ebener Boden - Flat bottom

Maßblatt-Nr. - Data sheet No.

**AZ 05.15**Typ: AZ EB -1.0- 235/260/285/320/  
360/400/450/500 dE  
dE = 35 mmgeteilte Ausführung  
splitted design

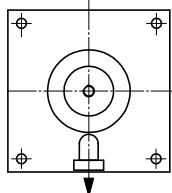
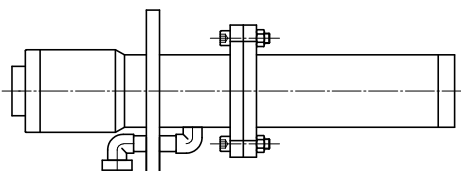
Bodenzapfen - Bottom pin

Maßblatt-Nr. - Data sheet No.

**AZ 05.14**Typ: AZ SF -1.0- 235/260/285/320/  
360/400/450/500 dE  
dE = 35 mm

Starrer Flansch kopfseitig - Fixed head mounting plate

Maßblatt-Nr. - Data sheet No.

**AZ 05.16**Typ: AZ SF -1.0- 235/260/285/320/  
360/400/450/500 dE  
dE = 35 mmgeteilte Ausführung  
splitted design

Starrer Flansch kopfseitig - Fixed head mounting plate